

Pole Conversion Tool Kit (PCTK-01)

Tools recommended for safe and efficient conversion of rigid pole to lowering poles



Kit includes:

	Product Code
Pole conversion tool	PCT-01
Marking tool	PCT-MT-02-AL
Ratchet pipe cutter	PCT-RPC-01
Spare blade	PCT-RPC-01-SB*
Socket wrench	PCT-SKWR
Riggers bag	PCT-RGB-01

PCT clamps suit pole sizes

NPS	DN	OD
1 1/4"	32	42.2
1 1/2"	40	48.3
2"	50	60.3

Note:

- Pole Conversion Tool (PCT-01) is structurally Certified (Reference Number: T-16-102) for use with a maximum fixture weight of 44 lb (10 ft pole).
- Onsite safe working procedures should be followed to locate and isolate power circuits at the switchboard.
- Lanyards are provided for your safety.
- Tools are available for conversion of PVC coated poles.

* Kit includes 1 spare blade for ratchet pipe cutter. Additional spare blades can be ordered separately.

**Multipurpose oil supplied as a consumable in kit only, not to be supplied separately.

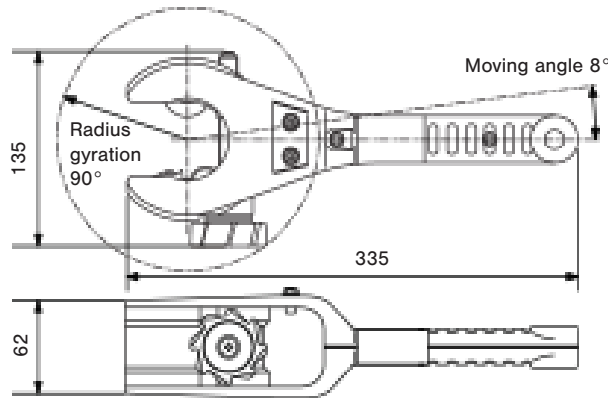
Product Warranty: The pole conversion tool is warranted by the seller to be free from defects in material and workmanship for twelve (12) months from the date of shipment. This warranty does not apply to equipment or goods which are misused, or abused, or damaged from installation, or not used in accordance with seller's instructions. Normal wear of equipment or goods is not included in this warranty. No responsibility will be taken for any modifications, alterations or additions to the standard product design. This includes exceeding recommended maximum weights for any fittings or exceeding the installed height.

Ratchet Pipe Cutter (PCT-RPC-01)

For cold cutting rigid poles



The ratchet cutter is designed to allow easy cutting in tight spaces. Cutting is possible with just an 8° swing of the handle. As the handle grip is moved forward and backward the rotary head turns and automatically feeds the cutting blade until pipe is cut.



USING THE RATCHET PIPE CUTTER

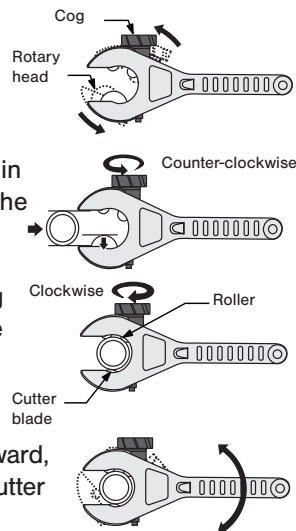
Before use, ensure any PVC coating is removed.

Turn the rotary head to fit the main body and the opening section of rotary head.

If cutter interferes with inserting pipe in the opening, turn the Cog and move the cutter until pipe can be inserted.

Fit the pipe on the roller, turn the Cog until it gets a little tight, and pinch the pipe with the cutter blade. Do not over tighten.

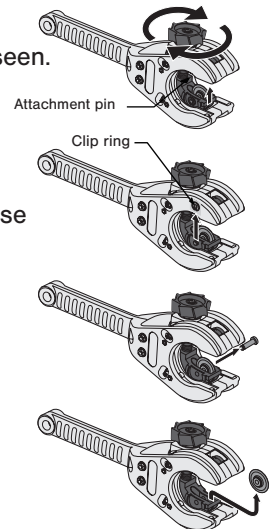
If you move the grip forward and backward, rotary head turns and with automatic cutter feeding mechanism, pipe is cut.



CHANGING CUTTER BLADE

Ratchet Pipe Cutter is supplied with three spare blades. If used in accordance with instructions and cutting lubricant, blades can last in excess of 50 cuts.

1. Turn cog until attachment pin can be seen.
2. Remove clip ring.
3. Remove attachment pin.
4. Remove cutter blade.
5. Replace cutter blade and follow reverse order for securing pin and clip ring.



! Be sure to apply grease (molybdenum grease) to attachment pin when cutter is changed.

IMPORTANT

To avoid blade failure:

- Ensure that the tool is cutting straight.
- Apply cutting oil to blade prior to each cut.
- Do not exceed 90° movement of handle grip in each backward and forward stroke.

NOTE

Maximum diameter cut: 2.6"

Maximum wall thickness:

- Carbon Steel - 0.15"
- Stainless Steel - 0.06"