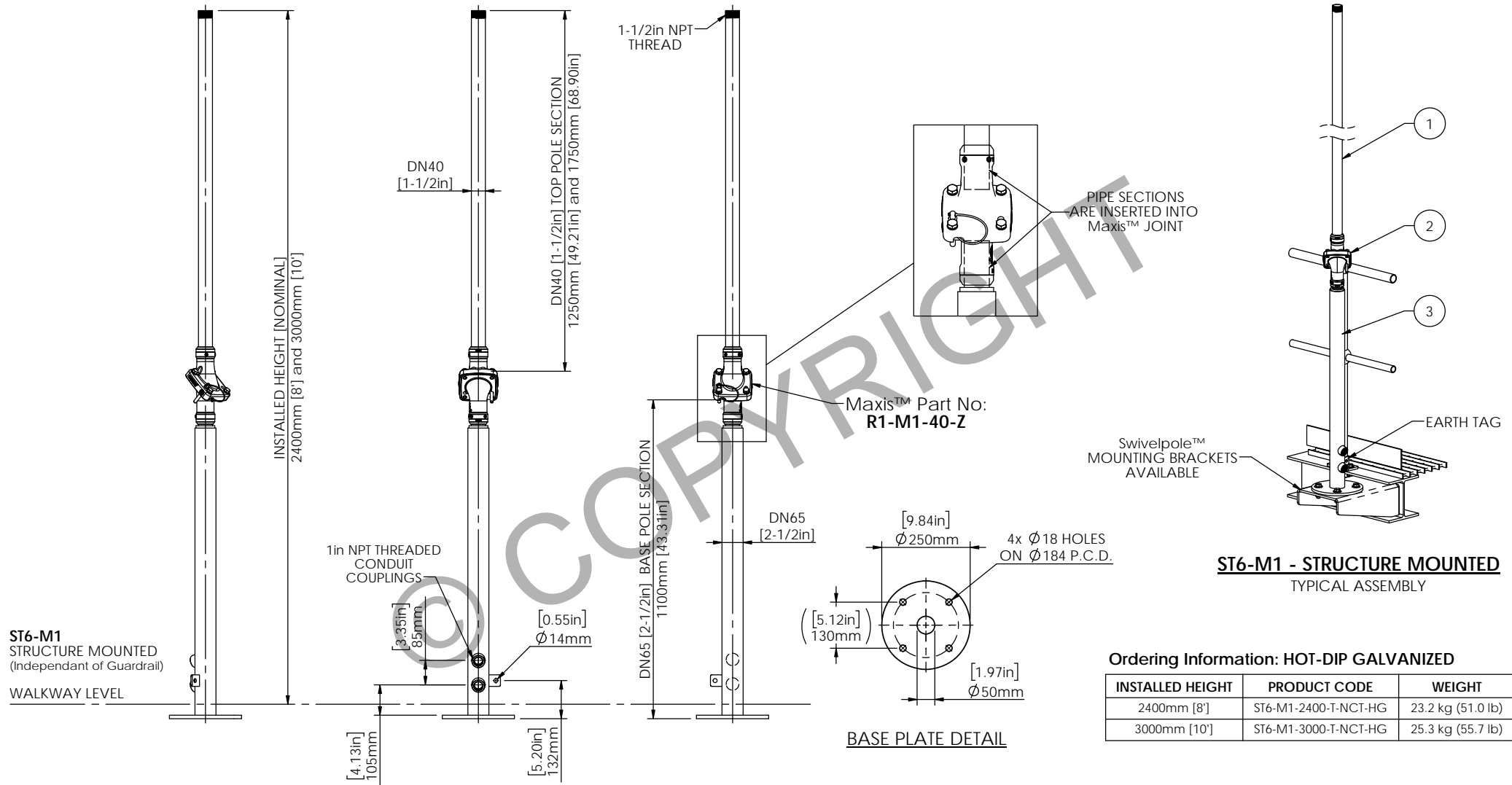


STRUCTURALLY CERTIFIED

ITEM NO.	QTY.	DESCRIPTION	MATERIAL OPTIONS
1	1	TOP POLE SECTION - THREADED	STEEL / HOT-DIP GALVANIZED
2	1	Maxis™ M1 JOINT	STEEL / ZINC ALUMINUM COATING
3	1	BASE POLE SECTION - CONDUIT CW REDUCER	STEEL / HOT-DIP GALVANIZED



Ordering Information: HOT-DIP GALVANIZED

INSTALLED HEIGHT	PRODUCT CODE	WEIGHT
2400mm [8']	ST6-M1-2400-T-NCT-HG	23.2 kg (51.0 lb)
3000mm [10']	ST6-M1-3000-T-NCT-HG	25.3 kg (55.7 lb)



Scan Code with QR Reader app for more Swivelpole™ Solutions

maxis
PATENTED
PRODUCTS

www.maxisjoint.com

PATENTED
PRODUCTS

www.swivelpole.com

Swivelpole

This document is the property of and protected by copyright owned by Swivelpole Group Pty Ltd and or Exemplar Products Pty Ltd. The designs and other information embodied in this document comprise confidential information of Swivelpole Group Pty Ltd and or Exemplar Products Pty Ltd and form part of products covered by international patents and registered designs including US patent No 6957832 and US patent No 9945143. Unauthorised use, reproduction and disclosure are strictly prohibited. This document must not be removed from the premises of the licensed user of this document without Swivelpole Group Pty Ltd's and or Exemplar Products Pty Ltd's prior approval.

ALL DIMENSIONS ARE IN MILLIMETERS / INCHES		SERIES / CODE	PART NUMBER
		ST	As Noted (RQ1598 - 21/7/20)
DRAWN BY	DATE	TITLE	
KM	20/02/19	Swivelpole™ ST6 - Maxis™ M1	
CHECKED BY	DATE	Base Section - CONDUITS - Top Section - THREADED	
BP	21/02/19	General Assembly	
APPROVED BY	DATE	DRG No	
RP	21/02/19	C-NEC-ST6-M1-6540-001-HG	
THIRD ANGLE PROJECTION	SCALE	N.T.S.	REV 3 A3

NEC