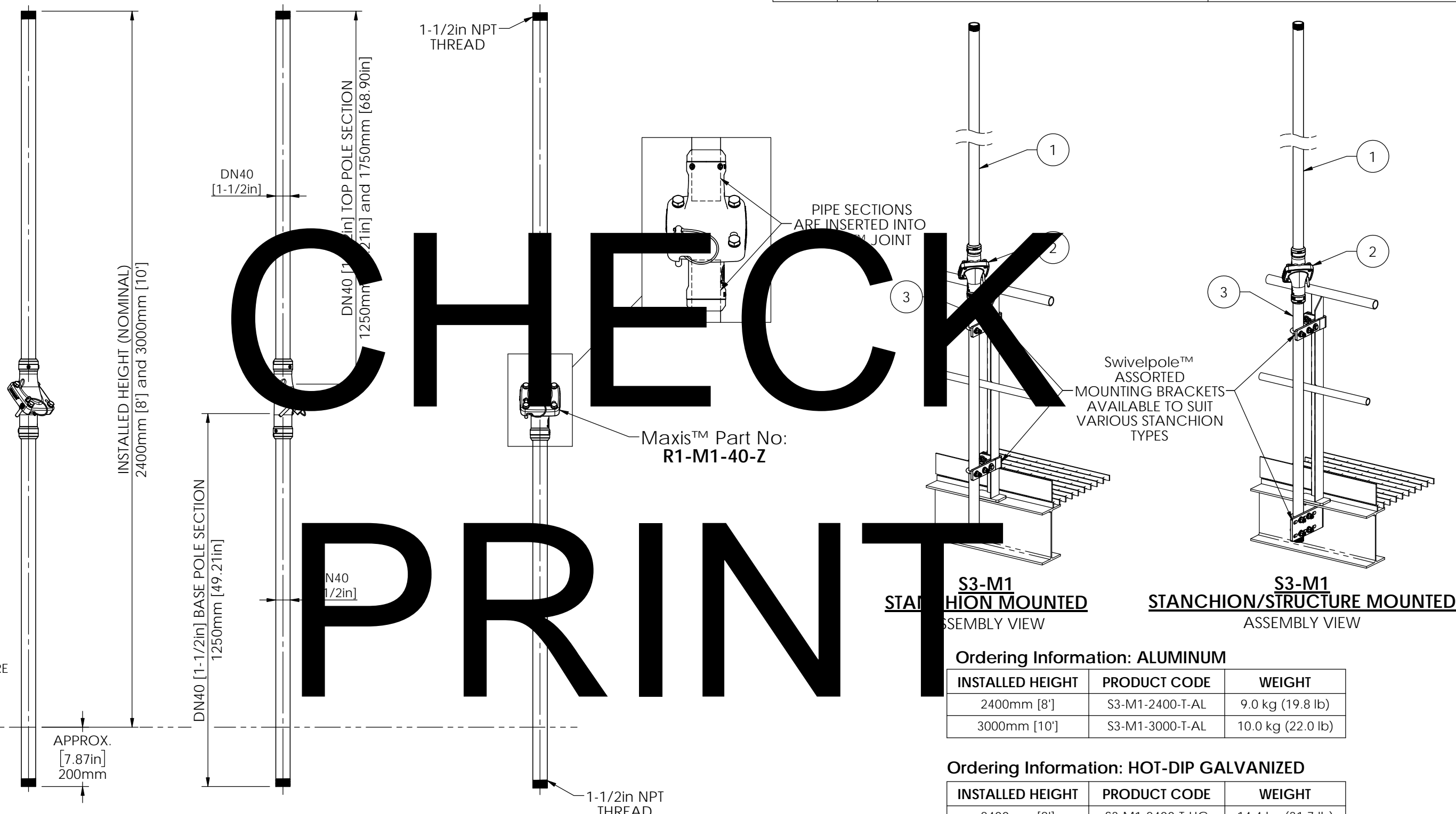


# STRUCTURALLY CERTIFIED

ITEM NO.	QTY.	DESCRIPTION	MATERIAL OPTIONS
1	1	TOP POLE SECTION - THREADED	STEEL / HOT-DIP GALVANIZED ALUMINUM
2	1	Maxis™ M1 Joint	STEEL / ZINC ALUMINUM COATING
3	1	BASE POLE SECTION - THREADED	STEEL / HOT-DIP GALVANIZED ALUMINUM

# CHECK PRINT



S3-M1  
STANCHION and  
STANCHION / STRUCTURE  
MOUNTED

WALKWAY LEVEL

APPROX.  
[7.87in]  
200mm

**S3-M1**  
**STANCHION MOUNTED**  
ASSEMBLY VIEW

**S3-M1**  
**STANCHION/STRUCTURE MOUNTED**  
ASSEMBLY VIEW

**Ordering Information: ALUMINUM**

INSTALLED HEIGHT	PRODUCT CODE	WEIGHT
2400mm [8']	S3-M1-2400-T-AL	9.0 kg (19.8 lb)
3000mm [10']	S3-M1-3000-T-AL	10.0 kg (22.0 lb)

**Ordering Information: HOT-DIP GALVANIZED**

INSTALLED HEIGHT	PRODUCT CODE	WEIGHT
2400mm [8']	S3-M1-2400-T-HG	14.4 kg (31.7 lb)
3000mm [10']	S3-M1-3000-T-HG	16.4 kg (36.1 lb)



Scan Code with  
QR Reader app for more  
Swivelpole™ Solutions

**maxis**  
PATENTED  
PRODUCTS

[www.maxisjoint.com](http://www.maxisjoint.com)

**PATENTED**  
PRODUCTS

[www.swivelpole.com](http://www.swivelpole.com)

**Swivelpole™**

This document is the property of and protected by copyright owned by Swivelpole Group Pty Ltd and or Exemplar Products Pty Ltd. The designs and other information embodied in this document comprise confidential information of Swivelpole Group Pty Ltd and or Exemplar Products Pty Ltd and form part of products covered by international patents and registered designs including US patent No 6957832 and US patent No 9945143. Unauthorised use, reproduction and disclosure are strictly prohibited. This document must not be removed from the premises of the licensed user of this document without Swivelpole Group Pty Ltd's and or Exemplar Products Pty Ltd's prior approval.

ALL DIMENSIONS ARE IN MILLIMETERS / INCHES	SERIES / CODE	PART NUMBER
	S	As Noted (RQ1578 - 25/02/20)
DRAWN BY: KM	DATE: 12/3/20	TITLE: Swivelpole™ S3 - Maxis™ M1
CHECKED BY: BP	DATE: 12/3/20	Base Section - THREADED - Top Section - THREADED
APPROVED BY: RP	DATE: 12/3/20	General Assembly
THIRD ANGLE PROJECTION	SCALE: N.T.S.	DRG No: C-NEC-S3-M1-4040-001-(HG-AL)

REV 1 A3

NEC