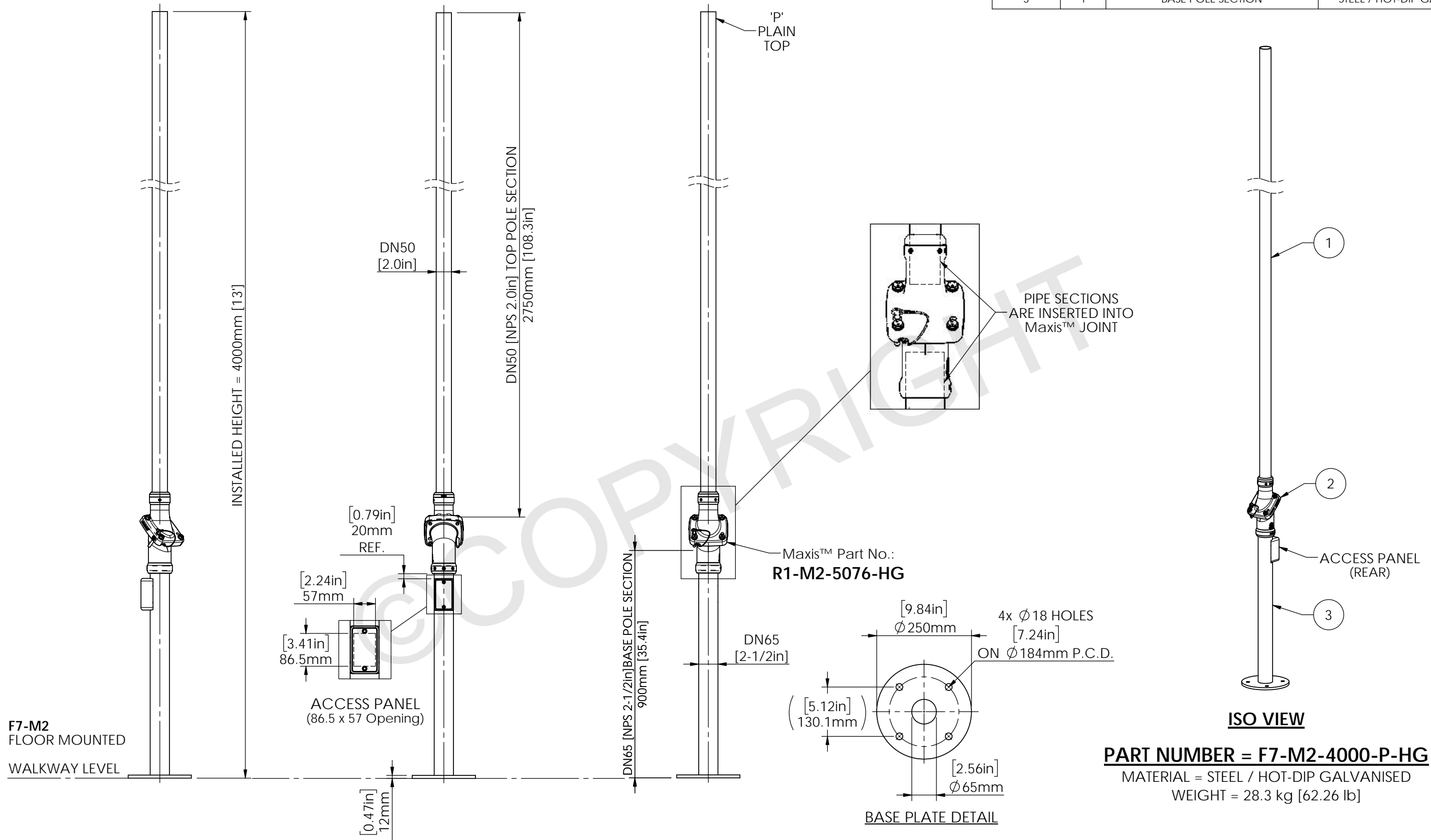


STRUCTURALLY CERTIFIED

ITEM NO.	QTY.	DESCRIPTION	MATERIAL
1	1	TOP POLE SECTION - PLAIN	STEEL / HOT-DIP GALVANISED
2	1	Maxis M2 Joint	STEEL / HOT-DIP GALVANISED
3	1	BASE POLE SECTION	STEEL / HOT-DIP GALVANISED



PART NUMBER = F7-M2-4000-P-HG

MATERIAL = STEEL / HOT-DIP GALVANISED

WEIGHT = 28.3 kg [62.26 lb]

F7-M2
FLOOR MOUNTED
WALKWAY LEVEL



Scan Code with QR Reader app for more Swivelpole™ Solutions

maxis
PATENTED
PRODUCTS

www.maxisjoint.com

**PATENTED
PRODUCTS**

www.swivelpole.com

Swivelpole™

This document is the property of and protected by copyright owned by Swivelpole Group Pty Ltd and or Exemplar Products Pty Ltd. The designs and other information embodied in this document comprise confidential information of Swivelpole Group Pty Ltd and or Exemplar Products Pty Ltd and form part of products covered by international patents and registered designs including US patent No 6957832 and US patent No 9945143. Unauthorised use, reproduction and disclosure are strictly prohibited. This document must not be removed from the premises of the licensed user of this document without Swivelpole Group Pty Ltd's and or Exemplar Products Pty Ltd's prior approval.

ALL DIMENSIONS ARE IN MILLIMETERS/INCHES		SERIES / CODE	PART NUMBER
		F	F7-M2-4000-P-HG
DRAWN BY	BP	DATE	01/02/24
CHECKED BY	KM	DATE	02/02/24
APPROVED BY	AI	DATE	02/02/24
THIRD ANGLE PROJECTION		SCALE	N.T.S.
TITLE			DRG No
Swivelpole™ F7 - Maxis™ M2 F7 Swivelpole - General Assembly (4m) Client Detail			C-NA-F7-M2-4000-P-HG
			REV
			0 A3

IEC