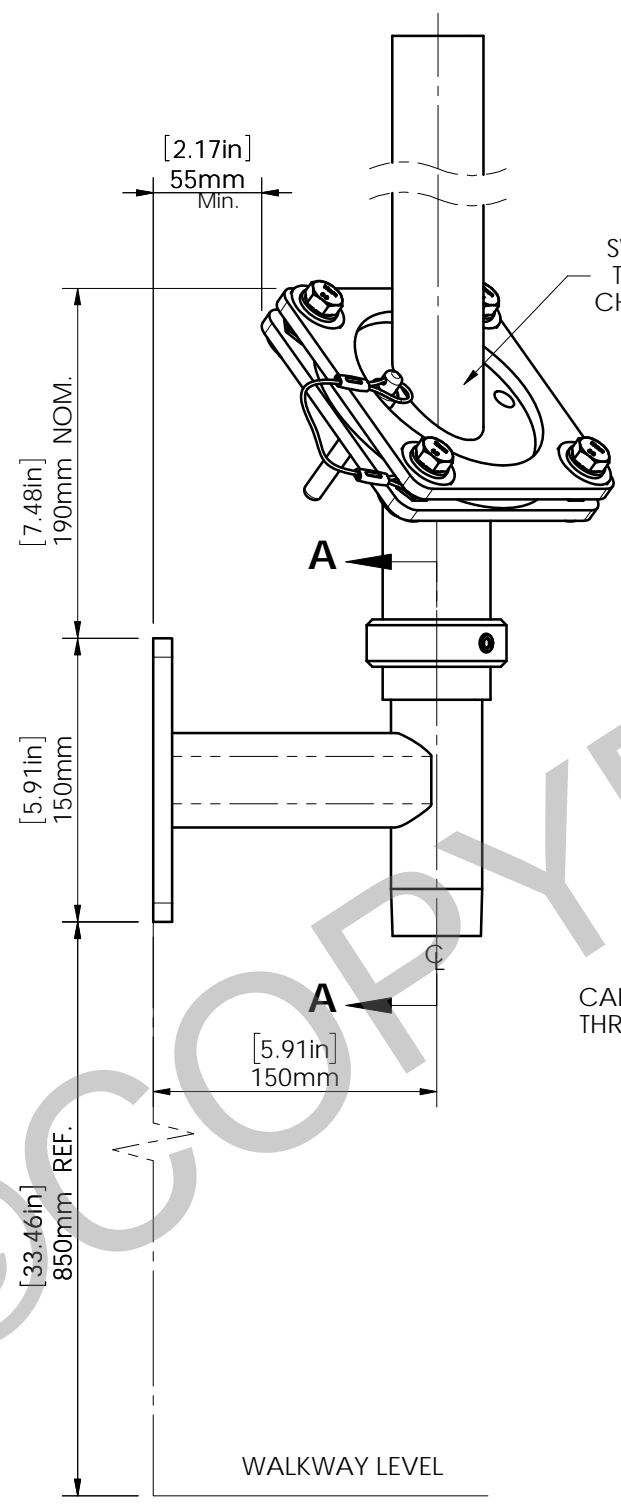


**C1 - MOUNTED POLE  
TYPICAL INSTALLATION**

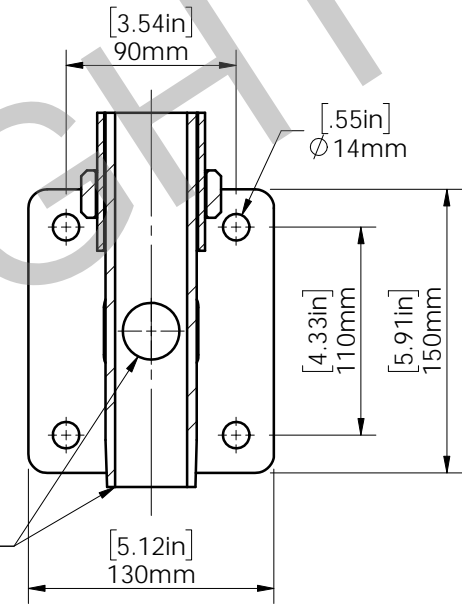
**NEC / IEC**



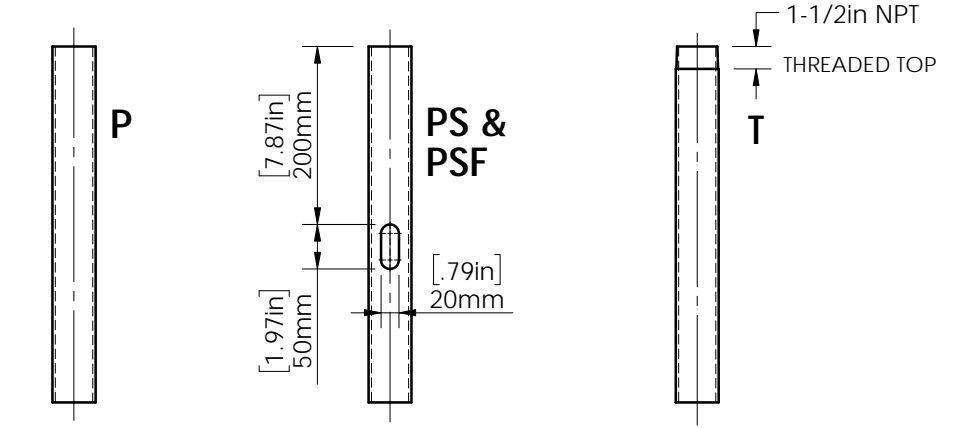
SWIVELPOLE CAN BE ROTATED THRU MB3 BRACKET AXIS, THIS CHANGES CLEARANCE SHOWN.

CABLE CAN BE ROUTED THROUGH BRACKET OR UP FROM BASE.

**SECTION A-A**

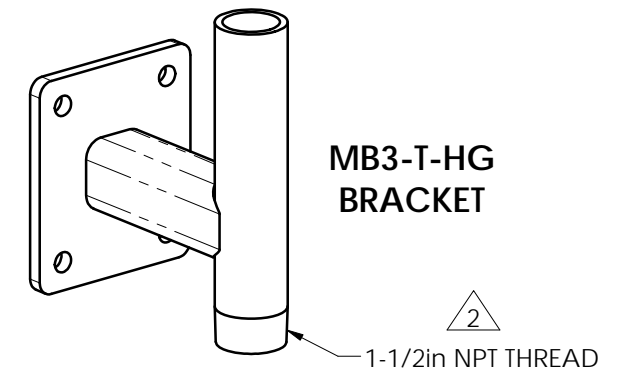


**POLE TOP OPTIONS**



'P' PLAIN (NO SLOT)  
'PS' POLE SLOTTED - REAR or 'PSF' POLE SLOTTED - FRONT

'T' THREADED



INSTALLED HEIGHT	PRODUCT CODE	WEIGHT	NEC / IEC
2400 [ 8' ]	C1-2400-P-HG	8.5 kg (18.7 lb)	NEC
2400 [ 8' ]	C1-2400-PS-HG	8.5 kg (18.7 lb)	IEC
2400 [ 8' ]	C1-2400-PSF-HG	8.5 kg (18.7 lb)	IEC
2400 [ 8' ]	C1-2400-T-HG	8.5 kg (18.7 lb)	NEC
3000 [ 10' ]	C1-3000-P-HG	10.6 kg (23.3 lb)	NEC
3000 [ 10' ]	C1-3000-PS-HG	10.6 kg (23.3 lb)	IEC
3000 [ 10' ]	C1-3000-PSF-HG	10.6 kg (23.3 lb)	IEC
3000 [ 10' ]	C1-3000-T-HG	10.6 kg (23.3 lb)	NEC

**MATERIAL = Steel - HDG Finish**



Scan Code with QR Reader app for more Swivelpole™ C Series Solutions

**PATENTED PRODUCTS**

[www.swivelpole.com](http://www.swivelpole.com)

**Swivelpole™**

This document is the property of and protected by copyright owned by Swivelpole Group Pty Ltd. The designs and other information embodied in this document comprise confidential information of Swivelpole Group Pty Ltd and form part of products covered by international patents and registered designs including US patent No 6957832. Unauthorised use, reproduction and disclosure are strictly prohibited. This document must not be removed from the premises of the licensed user of this document without Swivelpole Group Pty Ltd's prior approval.

ALL DIMENSIONS ARE IN MILLIMETERS / INCHES	PROJECT SWIVELPOLE™	SERIES / CODE C	PART NUMBER As shown	4 (RQ1378)
DRAWN BY AD	DATE 21-03-10	TITLE Swivelpole™ C1 DN40 [NPS 1-1/2in] Column/Wall Mounted Pole General assembly		
CHECKED BY FB	DATE 30-03-10	DRG No C-NA-C1-001-HG		
APPROVED BY PP	DATE 23-04-10	SCALE NTS	REV 4	A3
THIRD ANGLE PROJECTION				